

2120 Timber Creek Dr B2
Fort Collins, Colorado

\$425,000

Three Bedrooms • Three Bathrooms • End Unit • Attached Garage



Beautiful end-unit townhome located in the quiet Timber Ridge neighborhood in SE Fort Collins with an attached garage! Near Timberline & Harmony, enjoy convenient proximity to entertainment, tons of shopping, and dining options + it is located in the highly desirable Poudre School District!

More online



Scan QR Code for more information.



The main floor affords beautiful hard-surface flooring,
a gas fireplace in the living room,
and a sliding glass door to *your very own private patio.*

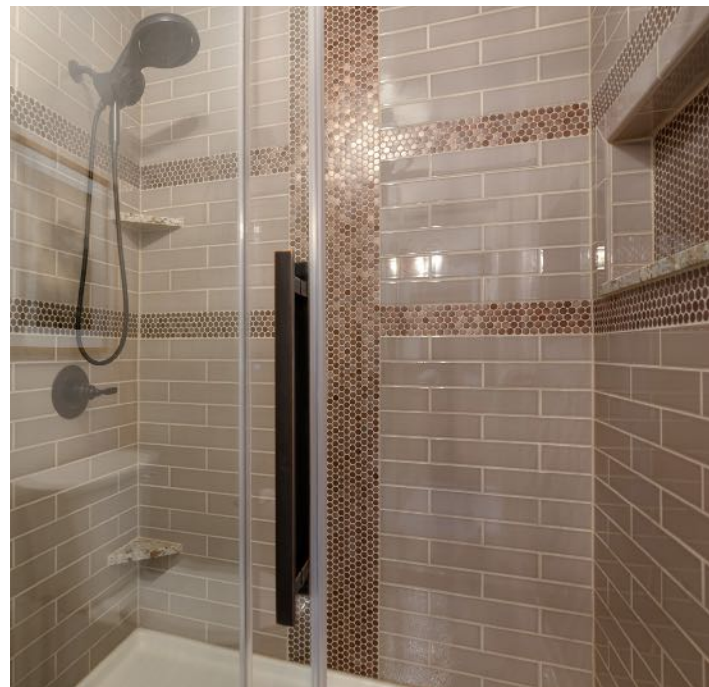


You will find tile floors, stainless steel appliances, an electric
range/oven, an under-mount sink, and granite counters in the kitchen.



*The sizeable
primary bedroom*

offers vaulted ceilings,
a ceiling fan, and a large
window overlooking the
well-maintained common
area and mature trees.

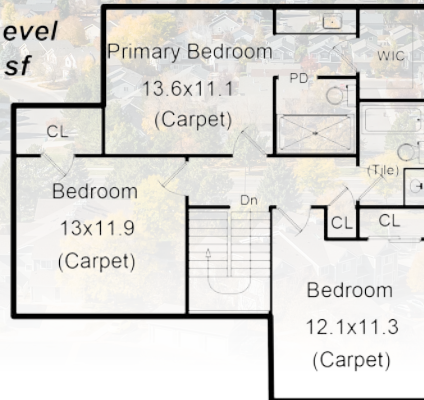


*You will love the spacious ensuite bathroom
with granite countertops, a lovely vessel sink, a stunning remodeled
walk-in shower + a large walk-in closet!*

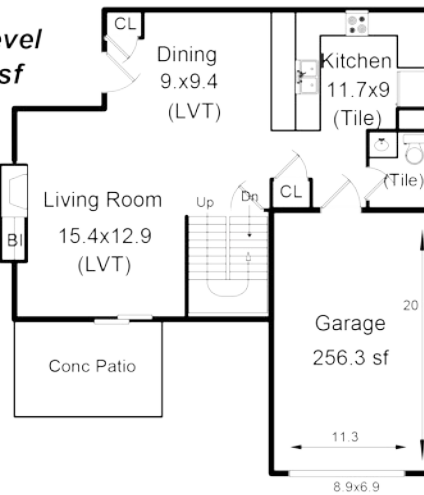
The HOA provides you with nicely maintained landscaping

and maintenance-free living.

Upper Level
811.6 sf



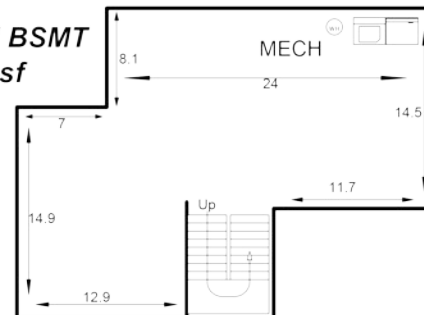
Main Level
623.1 sf



2120 Timber Creek #B2 Fort Collins

1-Total Sq Ft:	2258
2-Total Finished Sq Ft:	1435
3-Finished w/o Basement:	1435
4-Basement Sq Ft:	823
5-Basement Finished %:	0%

Unfinished BSMT
623.1 sf



Date: 10/17/22
Copyright Brett Sall C3
Scope of Work is on our website
Website: www.solerealtyservices.com

For lending options, visit

WWW.SALLTEAM.COM/FINANCING



Brett and Brittany Sall
(970) 795-2848
info@sallteam.com
www.sallteam.com

DETAILS

Built in 2000
Forced Air Heating
Central A/C

UTILITIES

Water: City (incl. w/ HOA)
Sewer: City (incl. w/ HOA)
Electric: City
Natural Gas: Xcel
Trash: Included with HOA
TV & Internet: Seller used Comcast

LOCATION

Timber Creek Subdivision

HOA

Fee: \$245/month
Docs available at sallteam.com

TAXES

\$2,090 (2021)
No Metro Tax

SCHOOLS

Poudre School District
Fossil Ridge High School
Preston Middle School
Kruse Elementary

INCLUSIONS / EXCLUSIONS

Inclusions:

Blinds, Electric Range/Oven, Self-Cleaning Oven, Dishwasher, Refrigerator, Clothes Washer, Clothes Dryer, Microwave, Garage Door Opener(1), Garage Door Remotes (2), Disposal, Smoke Alarm(s)

Exclusions:

staging props, seller's personal property

All listing information deemed reliable but not guaranteed. Buyer responsible for conducting their own due diligence and verifying all information.

